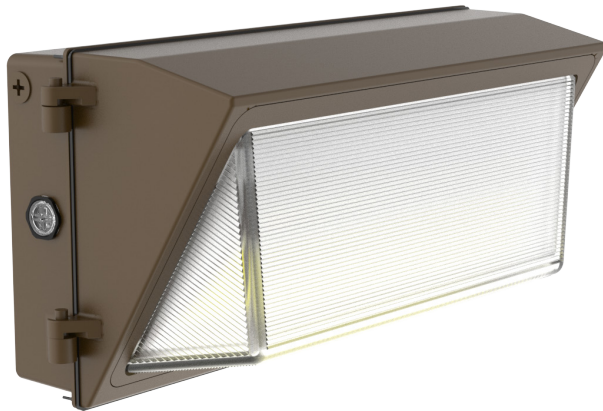


WMXE SERIES LED OUTDOOR LIGHTING

WMXE-LG-100-150W-MCTP-P-EM

POWER & 3 CCT ADJUSTABLE BUILDER SERIES TRADITIONAL WALL PACK WITH EMERGENCY BACKUP

MCTP Multi Color Temperature & Multi Power/Wattage (Selectable)



Avail. Finishes:

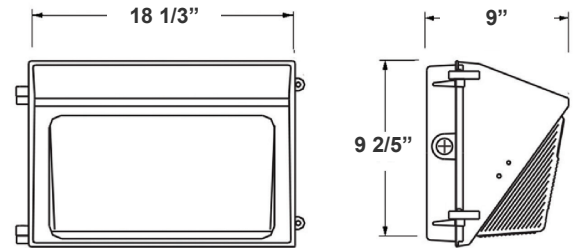


Customer Name: _____

Project Name: _____

Note: _____

Type: _____



18 1/3"(W) x 9 2/5"(H) x 9"(D)

Ideal for general site lighting, alleys, loading docks, doorway, pathway, and parking areas.

Features

- ADC12 Aluminum Heat Sink, Outdoor Powder Coating
- Multi-Power Switch is Inside the Fixture
- 7-year Warranty
- Prismatic Borosilicate Glass Lens

Technical Specifications

Electrical:

- Input Wattage: 100/120/150W
- Input Voltage: 120-277V AC 50/60Hz
- Input current: 1.4 A
- Power factor: >0.9
- Efficacy: 140 LPW

Mechanical:

- ADC12 Aluminum Heat Sink, Outdoor Powder Coating
- Lens: Prismatic Borosilicate Glass Lens
- DC Button Photocell with ON/OFF switch Included
- Same Footprint as Traditional HID Wall Packs
- Four 1/2" Hubs: 1 Top, 1 on Each Side, 1 Rear
- Mounting: Wall Mounting
- Operating Temperature: -40°F ~ 104°F
- Lifespan: 70000 Hrs.
- IP rating: IP65, Wet Locations

Lighting:

- Dimming: 0-10V Dimming
- Multi-Power Switch is Inside The Fixture
- Total Lumens: 21000LM Max.
- Color Temperature: 3000K/4000K/5000K
- CRI: >70

Applications:

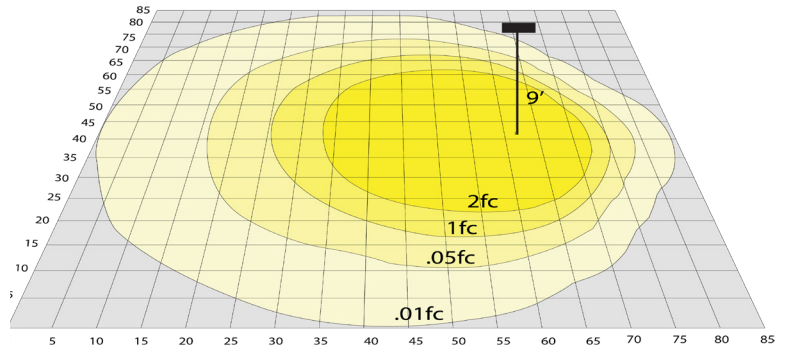
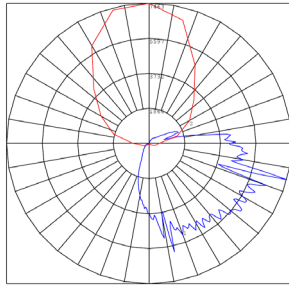
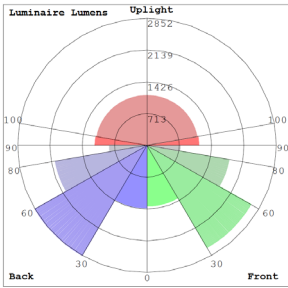
- Ideal for general site lighting, alleys, loading docks, doorway, pathway and parking areas.
- Replace existing HID wall packs
- Great for use with photocell

Other Models:

- 150W | 21000LM | WMXE-LG-100-150W-MCTP-P-BK



Photometrics: WMXE-LG-100-150W-MCTP-P-EM



BUG Rating: B3-U5-G5

Area 85'x 85' Mounting Height: 9'

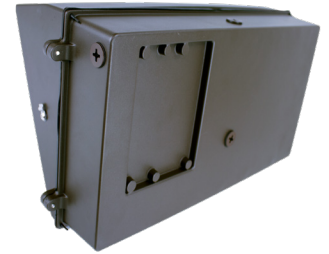
Other Views:



Side View



Front View



Back View

Performance Table: WMXE-LG-100-150W-MCTP-P-EM

MODEL NO.	Wattage	Voltage	Lumens	Color Temp.	BUG Rating	LPW
WMXE-LG-100-150W-MCTP-P-EM	100W	120-277V	14000LM	3000K	B3-U5-G5	140
	120W		16800LM	4000K		
	150W		21000LM	5000K		

Sample Ordering

Model Size Min. Watt Max. Watt Color Temp. Photocell Battery

WMXE - LG - 100 - 150W - MCTP - P - EM

Accessories:

Blank = No Option For Accessories

WML-SH3= SHIELD FOR WMXE-LG

Factory-Installed Options:

Blank = No Option For Accessories

OPT-EM-OD3INT= INTERNAL EMERGENCY BACKUP BATTERY

OPT-SEN-3MRLV-5= PROGRAMMABLE MICROWAVE

OPT-CLR-85= COLOR PAINT

WEC-8RC= REMOTE CONTROL

OPT-TRS-T20= TAMPER RESISTANT SCREW

FACTORY-INSTALLED OPTIONS:



OPT-EM-OD3INT



WEC-8RC



OPT-SEN-3MRLV-5

Dimensions:



WML-SH3
SHIELD FOR WMXE LG

